



On the RIVER

Connecting ALVA Florida NEIGHBORS and NEIGHBORHOODS



About the editor:

Ken DeWalt and wife Mona have lived in Oak Park, Alva since Christmas, 2014. They enjoy travel, history, reading, movies, and learning about our community by being involved in it.

Send posters, photos (jpegs only) or articles of 500 words maximum you would like to see printed or contact the editor with any questions, Ken DeWalt, kendewalt1@gmail.com

The deadline for receipt of any materials is the 15th of the month previous to the month you wish the articles to run. Issues go out before the 1st of each month. I do not take advertising at this time. Please understand that all articles are subject to available space and editor's approval.



Two representatives from the Lee County Sheriff's

Department presented information on current theft cases in Alva Village at the monthly ALVA INC meeting on March 12.

Ann Kelly, Crime Prevention Specialist and Mike Truscott, Eastern Region Deputy answered questions about several vehicular break-ins and burglaries, as well as nuisance reports of several individuals who are considered homeless.

Arrests are hoped for soon in the automotive thefts.

Meanwhile an almost instantaneous arrest was made when a trailer was stolen in which its owner had installed an inexpensive GPS device. 911 was called, officers tracked the trailer and found it and the suspect shortly thereafter.

Consider not only locking your vehicles, but placing a cell phone GPS unit on them as well!

And please lock your home and car doors. Quote from officer Mike Truscott, "If people just locked their vehicle doors and did not leave valuables in the cars, vehicular crime in Alva might drop 90%".

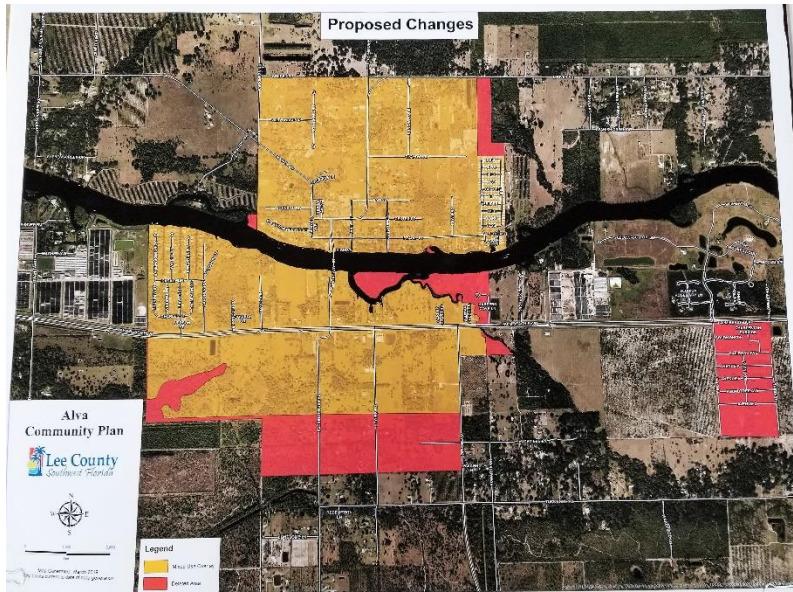
Lee County Department of Community Development staff

Shares ideas with Alva Residents

On Saturday March 23rd members of our Lee County planning team met with many interested residents from 10am to noon at the Alva Community Center on North River Road to discuss and gain further insight into changes planned for our area. The changes come in the form of proposed amendments to the Lee Plan and Land Development Code based on input from an Alva community survey meeting held in 2018.

Mikki Rozdolski, Planning Manager for Lee County, shared with me that the goal of her team's work has been to listen very closely to the wishes of Alva residents as they were made known a year ago, and through the comment cards handed out to attendees at this meeting. Ruby Daniels, Leader of the long active ALVA INC residents group agreed that the changes reflect alot of adherence to her group's wishes to KEEP ALVA RURAL. This was especially apparent to me in the limiting of future commercial development without major exceptions being made to the current area of retail construction on Route 80 south of the Alva Drawbridge at Broadway Street, and somewhat west and east of that point.

Ms. Rozdolski and members of her team shared that, as described in Objective # 28.2 of the proposed plan Alva Village and environs will have special attention paid by the county to protect buildings and areas especially deemed historic, like the original Alva school building and the Alva United Methodist Church.



Our village and the area directly around it on the north and south side of the river is purposed as 'urban-mixed use' and can be used for some commercial enterprises with public notice, and public involvement in the process is encouraged in each case. As an example, Mikki said that all interested persons will be invited to attend any hearings about the controversial and most recent commercial request, the golf driving range on route 80, south of the Caloosahatchee River.

Speaking of the south shore of our river, Ms. Rozdolski said future commercial development will take place for the most part along route 80 from just east of Joel

Boulevard to the former Yoder greenhouses to the west (see the map to the left and the tan highlighted area which has been designated as mixed use in our current plan. Looking at Objective # 28.1.3 we learned that the north shore and Alva Village especially can be considered for commercial entities but only with special care by the county planners, clear involvement by the residents and then no building larger than 10,000 square feet could be considered.

The changes proposed, amendments to the current plan, will move though the normal process required to amend the Lee Plan with opportunities for public input – one hearing with the Local Planning Agency and two hearings first for transmittal and then adoption. These will be public meetings.

For more information, visit the Lee County website

at <http://www.leegov.com/dcd/planning/cp/alva> or

contact PODPlanning@leegov.com. or contact Betsy Clayton at bclayton@leegov.com



a new six-legged sheriff in town.

Amy Bennett Williams, Fort Myers News-Press (abridged)

For the last few decades, bigheaded ants have been quietly outcompeting the dreaded South American invaders in Southwest Florida.

And while that's bad news for native species, it's less bad news for the humans who live and walk near their nests: Bigheaded ants' stingers are too small to penetrate people's skin the way fire ants do, leaving their victims pocked with ferociously itchy pustules.

But it's definitely not good news either. "Oh, they're bad news," said University of Florida entomologist Phil Koehler. "Nasty critters."

Bigheaded ants are listed in the top 100 of the "World's Worst Invaders" and probably came to the U.S. on cargo ships and now pose a danger to Florida's native insects.

Bigheaded ants are listed in the top 100 of the "World's Worst Invaders" and probably came to the U.S. on cargo ships and now pose a danger to Florida's native insects. (Photo: Amanda Inscore/The News-Press USA TODAY NETWORK - FLORIDA)

Bigheaded ants reproduce prodigiously. Their cities can stretch for whole blocks, and can take months of coordinated effort to remove.

"They are what's called a super colony," said ant expert Mike Ryan of Tempco Pest Control in Fort Myers.

"The population is so huge, they will actually force fire ants off your property," Ryan said. "They're so aggressive that no other ant can compete against them."

Biologists consider bigheaded ants to be one of the most pernicious invasive species in terms of the threat they pose to native insects, thereby disrupting the local ecology.

They can damage lawns and kill trees, and they also can come into homes seeking food, Ryan said.

"They can dig down 10 or 12 feet," he said, "They can actually dig under the foundation. The nest can be underneath your house and they can actually come in from the plumbing inside your kitchens and bathrooms." Once inside, they eat almost anything, but prefer proteins and fats.

One of the challenges of getting rid of bigheaded ants is "If you spray them, they bud, which means they split the colony, "So capitalize on their sociability, Ryan said. "Because they share food, what you want to do is feed a product to the ants so they bring it back and feed their friends and then there's this massive killing that happens." And keep vegetation trimmed back so it doesn't touch your house.





**Services available for
EVERYONE at Charleston Park
Community Center**

2541 Charleston Park Dr. Alva, FL 33920

Contact LASHAY RUSS for information

Charlestonpark1926@gmail.com

239-728-8895

-Goodwill INC Joblink available during office hours (job search and resume services).

-Food Pantry Every 4th Thursday at 10am-2pm (if you work during these hours please call to receive at another time and make an appointment so we can get you food as well).



**FREE Southern Breakfast Every
2nd Friday of each month, 9am**

-TOP (Teen Outreach Program) every Thursday @ 6pm 6th -12th grade only.

-Basic Learning Skill Tutoring Program for grades K-12 (come to the center and get your kids registered. Space is limited).

-All are welcome to attend our Neighborhood Association mtgs the second Monday of each month at 6pm.

-Tutoring for all ages available Mondays and Wednesdays at 5:30pm.

-And so much more! Keep your ears and eyes open for what's coming next.



< Still time to register for a vendor booth!

-Contact Lashay Russ, Charleston Park
Community Center Director, to reserve a
Booth.

llruss2003@gmail.com

239-728-8895

< Alva's historic Charleston Park. Founded in 1926.

Habitat for Humanity in Charleston Park

We have worked hard to get Habitat for Humanity to come to Charleston Park, and now they have come to begin your journey to becoming home owners for the 9 LOTS AVAILABLE IN CHARLESTON PARK

ALVA INC

Striving to Keep Alva RURAL
www.alvaf1.org

We meet every second Tuesday of the month at 7pm at the Alva Community Center.

We discuss items pertinent to our community, families, schools, and homes.

Join us to learn what's happening, and how you may be a part of what's happening as Lee County Grows eastward toward our country haven.

One of Alva INC's professional sponsors: **COUNTRY CARE PET SITTING, 863-610-1607**



Six Mile Cypress Slough, Lee County Park

7751 Penzance Boulevard, Fort Myers, FL. 33966



Become a member. Enjoy our meetings: April 24 Charles O'Connor, Florida's Incredible Prehistoric Animals (large teaching collection of vertebrate fossils).

(239) 533-7557

A new addition to the park boardwalk are these easy to see markers telling anyone on the large loop boardwalk where you are on the walk.

As nice as it might be to know what distance you have walked, these were placed by Fort Myers EMS team members so that anyone with a physical or other problem may call in their location within 100 feet either way.

I hope they only get used for measuring footsteps, but better safe than sorry!



Manatee Park, 10901 Palm Beach Blvd, Fort Myers, FL 33905



The park kayak launch is closed for the season but there is an alternate launch at the park with direct access to the Orange River. This launch is open to the public with paid parking. You will need to walk your paddlecraft about 390 ft to access this location. The launch closes daily at 4:30 p.m. Few manatees are seen as the weather warms up.

Hickey's Creek Mitigation Park

17980 Palm Beach Blvd, Alva, FL 33920



Co-managed by the Lee County Department of Parks and Recreation and the Florida Fish and Wildlife Conservation Commission.

It consists of a variety of habitats including palmetto-oak scrub, pine flatwoods, and seasonal wetlands. Views of scenic Hickey Creek can be enjoyed from the trail and overlook areas.

The ecosystem presently supports the threatened Florida Scrub-Jay and gopher tortoises.

W.P. Franklin Lock & Dam South Recreation Area

Franklin Lock Rd. , Alva , FL 33920. Contact: (239) 694-2582

This day use area has a visitor center, boat ramp, volleyball and horseshoe courts, a playground, beach (no swimming) and several covered picnic sites. Flush toilets and drinking water are also available.

There are two group picnic shelters available for reservation. Each shelter has water and electricity, six picnic tables, a large charcoal BBQ grill and can accommodate up to 50 people.

Lock usage: Operating hours 7 a.m. to 5 p.m., 365 days a year, unless otherwise noted in the Coast Guard published, "Notice to Mariners." Lockage usually takes 15 to 20 minutes.



You think the Franklin Lock takes a while to get through? Imagine going through all of these to get to lunch down river!

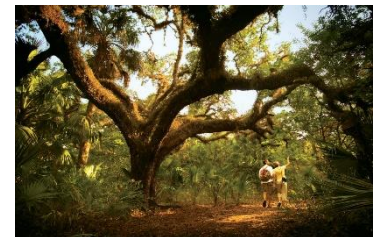
This is the Kenet & Avon Canal in Southern England.

Caloosahatchee Regional Park

19130 North River Road, Alva, FL 33920 (239) 694-0398

EMAIL: leeparks@leegov.com

7 a.m.-7 p.m. Daily: Campground Gate (parking lot #1) remains open until 10 p.m. on Friday and Saturday nights (from September through May).



NORTH FORT MYERS Recreation Park

2000 North Recreation Park Way

North Fort Myers, FL 33903



Find us online at www.leeparks.org or on instagram @leeparksandrecreation Membership to the center costs \$10 per individual or \$25 per family for a lifetime membership. Membership entitles general use of the four large Recreation Centers in Lee County including gymnasium activities and use of the "Rec Room". Enrollment in programs and use of the fitness center may have an additional monthly fee.

Veterans Park Recreation Center

55 Homestead Road South

Lehigh Acres, FL 33936



Lodge and pavilions available for rent for large or small gatherings



ALVA Walking & Running

events from AARP <https://local.aarp.org/alvaf/walking-racing-events/>

Mosquito Control Service Request:

What kind of activity are you seeing regarding mosquitoes in your area? Submit a service request if you are seeing them in your area. We pay good money for this service so let's use it! –

Paul Harper , in NEXTDOOR

https://lee.leateamapps.com/map/mv_public_map

Fort Myers MEALS ON WHEELS wants to begin their wonderful service to homebounds of any age in ALVA!



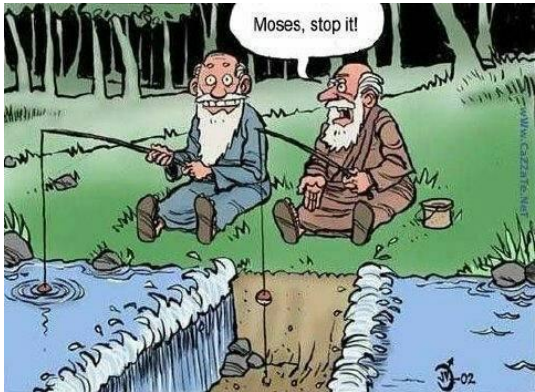
Volunteer Drivers Needed for this service to begin in ALVA!



Our caring Meals on Wheels volunteers provide daily, nutritious home-delivered meals and a friendly, safety and security check to eligible homebound neighbors who cannot shop or cook for themselves. These neighbors include seniors, the disabled, or chronically ill adults under the age of 60.

To become a volunteer driver/deliverer to clients, or to become a client receiver of meals and other services, please contact:

Rose Goree-Lawrence, Admin. Asst., PO Box 2143, Fort Myers, FL 33909 or call her at 239-337-1055 or email her at Rose@CommunityCooperative.com



Alva Boat Ramp

Perhaps the most popular place in Alva

Some of our local ALVA churches:

□
St. Vincent DePaul's RC Church

13031 Palm Beach Boulevard, Fort Myers, FL 33905

www.stvincentftmyers.org

239-693-0818

Alva United Methodist Church

21440 Pearl St. P.O Box 96

Alva, FL 33920

Alvamc@embargmail.com

239-728-2277

Alva Church of God

21520 Park St, Alva, Florida 33920

239-728-2644

Liberation International Church

Avenue D, Charleston Park

Alva, FL 33920

239-601-4870

First Spanish Assembly of God Church

2219 Joel Blvd, Alva, FL 33920

239-728-5440

Countryside Wesleyan Church

17750 Palm Beach Blvd, Alva, FL 33920

239-368-3270

Calvary Church

19850 Palm Beach Blvd

Alva, FL 33920

www.calvarychurchswfl.org

239-728-5566

First Baptist Church of Alva

2790 Joel Blvd, Alva, FL, 33920

www.alvabaptist.com

239-728-2034

St. Vincent DePaul RC



Our Lady's Cupboard Food Pantry

Breakfast cereal and canned fruit continue to be needed in Our Lady's Cupboard Food Pantry. Many of the families we provide assistance to have children of school age and they need a nutritious start to the day. If you are able to help us and provide a donation, please try to keep in mind the Food Pyramid.

ALVA UMC

Food Pantry @ Bethany House

Food Pantry: 9am-12pm 1st & 3rd Wednesdays

Bread Pantry: 8am-10am 2nd & 4th Wednesday

A bit of ALVA History

History, or legend? Truth, or myth? You decide...

Grandpa's Steamboat



This story is true, mostly. There really was a swing bridge across the Caloosahatchee at Alva, Florida that replaced an earlier swing bridge (that became Matlacha's first swing bridge) that replaced the ferry that was replaced in the 1960's by our current raised drawbridge after the US Airforce missile hit it during the space race (but that's another mostly true tale for another day).

This story is about that first 1903 swing bridge that was replaced in the early 1920's by the one that became a rocket target in the 1960's. And I had a grandad, two

actually, but the senior in this account is not either of them. You may judge for yourself what else of this tale is fact, or fiction.

-----It was back when steamboats still plied the shallow and not so wide waters of the Caloosahatchee, not long after the end of the Great War- the one to end all wars. Grandpa lived in a cabin a mile or more upriver from the still bustling little town of Alva. Grandpa had a boat. A 17' rowboat. And that boat was his only transportation up or down river.

Grandpa had a best friend. He was the tender on the Swing Bridge. One day Grandpa was teasing his friend ever so much about how he'd open his bridge for steamers like the Thomas Edison or Uneeda but wouldn't bother to crank the winch for a row boat. 'Well sure', Grandpa's friend said. 'Why would I open her up for a dinky dinghy that can fit right smart under me on it's own?'

Grandpa allowed as it was a matter of respect, and he deserved such at least because he was the good friend of the bridge tender. But the tender said he wasn't allowed and would never open his bridge for a boat too small to notice and too low down to bother with. Grandpa chewed on his lower lip a bit, slid his chaw of tobacco from the left to the right cheek, and said nothing. They went on to speak of other things.

Weeks went by with Grandpa rowing his boat downriver getting no attention from the swing bridge as he floated under, and back again at the end of the day. Just short conversation from his friend. Then a few days went by with no Grandpa on the river. The bridge tender got worried. There was no phone to Grandpa's and the dirt road to Fort Denaud was separated from Grandpa's cabin by a thick swamp.

Monday of the second week of no Grandpa, early in the morning, with the thick fog just beginning to burn off in the hot summer sun, the bridge tender heard a mighty roar from upriver. A full throated power horn such as only the largest boats that could generate their own electricity had on the Caloosahatchee and it was screaming to be let through the bridge when no boat at all was expected!

Run! The bridge tender knew he only had minutes to open the bridge for the behemoth that must be heading southwest to Fort Myers.

He ran from one end of the bridge to the other dropping the roadway gates. He ran to the center of the bridge where his tense muscles worked the gears that slowly turned the bridge from a roadbed into a watergate. Again the horn bellowed! Louder, he was sure, as his early morning visitor would surely soon be creeping through the fog right into his still partially opened span!

Finally he had her wide open and waiting, him sweating and panting away in the tropical heat. An early car or two and a field truck waited at either end of the bridge. A couple wagons pulled by mules whoaed up behind them. Kids heading for Alva school began to gather at the south bank straining to see what sort of Monster this steamer would be coming down their river. But through the fog none could see.

Finally, as seconds and then minutes passed and no great vessel appeared, the bridge tender heard a familiar voice from the fog. Familiar and close. "Thanks friend! I figured someday ya'll would show me the respect I deserve!" and the bow of Grandpa's little row boat pushed itself out of the murk almost under the bridge tender himself as Gramps steadily rowed far under the open span to the shouts and laughter from both shores, all at the bridge tenders expense.

You see, Grandpa'd been planning this little funnin' for months. He had ordered an electric battery and horn like highway trucks used from Sears and Roebuck's catalog weeks before. Once he had the horn installed in the boat, with the switch mounted on one oar, he just had to wait for the foggiest day possible to catch up his friend in the prank.

Well, story is that these two, after a short time of cooling down by the bridgetender, shook hands and swapped stories ever after. But years later, when that Air Force missile barge smashed the second swing bridge completely, some said they could hear old Grandpa laughing "Gotcha agin' friend!" at the pushboat wheel.



JUST BE KIND

Have you noticed the occasional "Just be Kind" sign catching your eye along our roadways? Polly Kiely of Alva was inspired to begin an Alva sign movement when she learned of a Central Indiana youth project started in 2015. The message is a gentle reminder that may impact positive interactions with others and lift one's spirit. Kindness is contagious, and something we can all benefit from. For more information, Google "Just be Kind".

The origin of the JUST BE KIND sign movement:

<https://fox59.com/2018/08/08/just-be-kind-movement-spreading-worldwide/>

To find out more about Polly's local efforts and how you may become a part of them contact Polly at: pbkiely@embarqmail.com



ALVA GARDEN CLUB NEWS

<http://www.fmlcgardencouncil.com/council-directory/102/alva-garden-club/>

Meeting Time: 3rd Tuesday of the month (Oct.–May) 2:00 pm

Meeting Location: The Alva Library Museum, 21420 East Pearl Street, Alva, FL 33920

A visit worth your time!

The ALVA MUSEUM

in the historic Alva Library Building,

one of the oldest library buildings in existence
anywhere in Florida

Grand Re-Opening is COMING!



March 9 was STRAWBERRY FESTIVAL DAY!



DISCOVER

what the author of FLORIDA BACKROADS TRAVEL has to say about our community

<https://www.florida-backroads-travel.com/alva-florida.html>



SOUTH FLORIDA HOMELAND SECURITY

Reprinted from Funny Times / PO Box 18530 / Cleveland Hts. OH 44118
phone: 216.371.8600 / email: ft@funnytimes.com



Alva Community Park and Community Center

21471 North River Road, Alva, FL 33920

Where Alva gathers to PLAN AND PLAY



ALVA FIRE CONTROL & RESCUE SERVICE

Residents of Alva, your Board of Commissioners will be accepting resumes for Board Commissioners at 2660 Styles Road, Alva, FL. 33920. There is currently 1 Vacant Commissioners Seat and 1 more that will become Vacant in the very near future.

We are in need of two (2) dedicated, dependable and team oriented individuals who would like to serve their community. Resumes will be accepted up until April 8, 2019, which is our next scheduled Commissioners Meeting, beginning promptly at 6:00 PM, everyone is encouraged to attend.

The ALVA FIRE CO BBQ!

Over 400 chickens were smoked to a rich tender flavor for as many hungry

diners. This tradition in Alva has been going on for over 30 years according to the fire and emergency personnel I found watching the three hot smokers working away on the next batch.

If you missed it this weekend make plans to mark your calendars as soon as the date is posted next time.



Your RIVERDALE LIBRARY



Location:

2421 Buckingham Road

Fort Myers, FL 33905

Directions to Riverdale Branch Library

Hours:

Tuesday (Noon-8 p.m.)

Wednesday and Thursday (10 a.m.-6 p.m.)

Friday and Saturday (9 a.m.-5 p.m.)

Contact: 239-533-4370 , Branch Manager: Alyssa Diekman. Closed Sundays and Mondays

JUST SOME of our APRIL EVENTS

Every Wednesday: Casual Cards and Games 1:00pm - 3:00pm

April 9 Book Discussion - The 100-Year-Old Man Who Climbed Out the Window and Disappeared 12:00pm - 1:30pm

April 30 Movie Night for Grown Ups -"Green Book",5:30pm -7:30pm



Spring has sprung at the Riverdale Library!

Library staff had the opportunity recently to attend Alva's Annual Plant Sale, Bake Sale, and Strawberry Shortcake Festival. The tiny community was big on inspiration as it came together to support the Alva Museum with beautiful plants, homegrown vegetables, homemade goodies and strawberries! Here at the library we'd like to inspire you to cultivate your green thumb as well! Check out our assortment of gardening books or visit our online

gardening database to begin planning your next backyard project. All this and more, free with your library card! Also, be sure to join us on Saturday, April 13 at 10 am for our Crafterday Morning Program where we will be creating seed cards from recycled paper. A great gift just in time for Earth Day! For more information on what's happening at the library, please visit leelibrary.net.



Gardening, Landscape and Horticulture Collection

Articles on the practical aspects of gardening, horticulture, and more

**LEE COUNTY
EMERGENCY**

& SERVICE CONTACT INFORMATION

ACT-Abuse Shelter (Domestic Violence) 939-3112
 Addiction Services (Salus Care) 332-6989
 Alcoholics Anonymous 275-5111
 Ambulance (emergency) **9-1-1**
 Animal Services 533-3353
 Citizens Dispute (Mediation) 533-2885
 Chamber of Commerce SW Fla. 275-2102
 Child Abuse 800-962-2873
 Child Support Enforcement 877-769-0251
 Clerk of Courts 533-5000
 Code Enforcement 533-8895
 Clear Point Credit Counseling 278-3121
 County Commission 533-2259
 Dead Animal Removal 949-6246
 Division of Motor Vehicles 533-6000
 Dept of Transportation-County 533-8580
 Drug Abuse (Salus Care) 275-3222
 Economic Crimes Unit 258-3240
 Elder Abuse Hotline 800-962-2873
 Elder Helpline United Way 2-1-1
Emergencies 9-1-1
 Fraud Line (LCSO) 258-3287
 Health Department 332-9647
 Humane Society (Gulf Coast) 332-0364
 Lee County Transit (Lee Tran) 533-8726
 Mental Health (Salus Care) 275-3222
 Legal Aid 334-6118
 Libraries 479-4636
 Parks & Recreation 533-7275
 Poison Information Center 800-222-1222
 Probation Office (County) 533-9199
 Probation Office (State) 338-2349
 Public Defender 533-2911
 Red Cross 278-3401
 School Board 334-1102
 School Transportation/Bus Barn 590-4000
 Social Security Administration 800-772-1213
 State Attorney 533-1000
 Suicide Prevention Lifeline 800-273-8255
 Supervisor of Elections 533-8683
 Tax Collector 533-6000
 Veterans Services Office 800-827-1000

Lee County Sheriff's Office Headquarters
 14750 Six Mile Cypress Pkwy
 Ft. Myers, FL 33912 477-1000

North District Substation
 121 Pondella Road
 N. Ft. Myers, FL 33903 477-1810

East District Substation
 1301 Homestead Road North
 Lehigh Acres, FL 33936 477-1820

West District Substation
 15650 Pine Ridge Road
 Ft. Myers, FL 33908 477-1830

South District Substation
 8951 Bonita Beach Road #565
 Bonita Springs, FL 34135 477-1840

Bonita Springs Substation
 10520 Reynolds St
 Bonita Springs, FL 34135 477-1140

Central District Substation
 14750 Six Mile Cypress Pkwy.
 Ft. Myers, FL 33912 477-1850

Gulf Substation 282-5766

Lee County Jail (inmate information)
 2115 Dr. Martin Luther King, Jr. Blvd
 Ft. Myers, FL 33901 477-1500

Civil Process
 2072 Victoria Avenue
 Ft. Myers, FL 33901 477-1353

Lee County Gun Range
 6570 Felix Romano Avenue
 Fort Myers, FL 33905 690-3999

Community Relations 258-3280
Fraud Line 258-3292

Juvenile Assessment Center (JAC)
 2115 Dr. Martin Luther King, Jr. Blvd
 Ft. Myers, FL 33901 344-5100

**FEDERAL, STATE & LOCAL LAW
ENFORCEMENT**

Fort Myers Police 321-7700
 Cape Coral Police 574-3223
 Sanibel Police 472-3111
 Port Authority Police 590-4810
 Florida Highway Patrol 278-7100
 Federal Bureau of Investigations 337-7171
 Drug Enforcement Agency (DEA) 275-3662
 Fla. Department of Law Enforcement 278-7080
 Federal Government Info. Center 800/688-9889
 Fish & Wildlife Commission 863-648-3200



Lee County Refugee Center
 125 Gilbert Avenue South
 Lehigh Acres, FL 33973
 239-745-8401

Did you know we had a refugee center in Lee County?

Our Purpose

Advocate legal rights of individuals who flee their homeland for being victim of oppression, fear, mistreatment, and discrimination.

We make sure each and every Immigrant arrived on our shores is treated equally. Lee County Refugee Center supports them throughout the legalization process until they become able to vote.



APRIL 22 (EARTH DAY) - APRIL 28
 RECREATE – EDUCATE – CULTIVATE

www.calusawaterkeeper.org

BIG CALUSA Mission Statement: To reconnect the community in a positive way with our waterways and celebrate all the reasons we love our region - for its exceptional beaches, rivers and tributaries, its boundless recreational opportunities and its sheer beauty.

CALUSA CLEAN-UP KICK-OFF PARTY hosted by Millennial Brewing - Monday April 22 (EARTH DAY).

CALUSA CLEAN-UP - A Week-long Clean-Up of our Waterways starting Monday April 22nd (Earth Day) and running through Saturday, April 27th, In partnership with civic associations, HOAs, service groups, churches and schools, we will embark on a concerted effort to clean our Waterways.



Fight for the Light at SR31 and SR78

by: Josh Dorcey

Location: Alva, FL

145 SUPPORTERS IN ALVA

412 SUPPORTERS

600 GOAL

If you are a concerned resident or worker in Alva, North Olga, Babcock Ranch or North Fort Myers, Florida, please sign this petition and help Fight For The Light!

Sign the petition on here or FACEBOOK now:

www.thepetitionsite.com/960/363/539/fight-for-the-light-at-sr31-and-sr78/

Or call for information: Sue Bisplinghoff, 239 980 2470

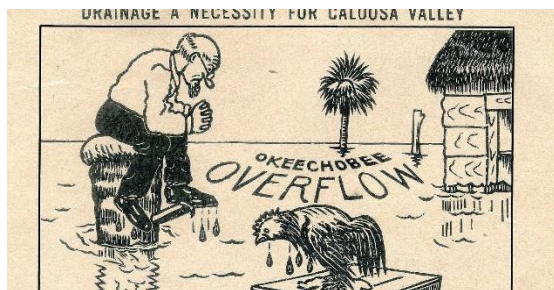
9th Goodwill Golf Classic

River Hall, Thursday, May 2



Join us Thursday, May 2 at River Hall Country Club to fun-raise for the Southwest Florida Goodwill Foundation. Enjoy 18 holes of golf on a Davis Love III-designed course, cart, a hot lunch and prizes for \$99. Warm-up begins at 7:30 a.m./ Shotgun start at 8:30 a.m.

So, register today for a hard day's work on the River Hall greens! Hole sponsorships are available for \$100 from the same link.



**Once upon
our time**



Did you know Alva has a chapter of the Daughter's of the American Revolution?

USS Hannah Chapter NSDAR

National Society

**Daughters of the American Revolution
| Alva, Florida**

*Monthly meeting held at Alva UMC in Fellowship
Hall*

Consider joining your local DAR Chapter

<http://usshannahnsdar.org/>



Named for the first commissioned ship of the US Navy

When you're able to plan ahead, use Hospital Compare. This free tool helps you find hospitals and compare differences in quality of care, both locally and nationwide.

Go to www.medicare.gov and search for HOSPITAL COMPARE.

When you're comparing hospitals, look for one that:

Has the best experience with your condition.

Participates in Medicare and is covered by your health plan.

Checks and improves the quality of its care.

Performs well on quality measures, including a national patient survey.

Meets your needs in terms of location.

After using Hospital Compare, talk with your health care provider to see which hospital will best meet your health care needs.

Sincerely,

The US Government Medicare Team





On March 26 Oak Park Mobile Home Community in Alva invited Ann Kelly, Lee County Sheriff's Dept. Crime Specialist out to offer a crime prevention seminar to residents.

Highlights of Her Program

Ms. Kelly would be happy to offer a similar program to any age group, church, school, club about any topic of crime prevention you are concerned about.

-Plantings around the house: Keep bushes trimmed lower than 3' and trees limbed at least 4' from the ground.

-Consider motion sensor lights but speak with close neighbors about placement so you don't bother them unnecessarily at night.

-Hide a key outside a neighbors house with their permission, not at your house. Or just give it to neighbor to hold. Thieves will know your outside hiding places.

-Use locksmith to place blocking devices on your sliding doors. It's easy for a nonprofessional to break the glass.

-LOCK all doors and windows ALL the time. Even when you are home. Even in ALVA.

-Do not leave valuables or desirables visible in your vehicle. Chances are thieves will not risk breaking glass and attracting attention.

-Consider a professional security company alarm system. Beware scam companies.

-Use caller ID and don't answer phone at all if you do not know the number. Let them leave a message.

-The master bedroom is the primary target room of thieves. Store all valuables outside of that room somewhere else.

-Photograph and record all distinguishing marks or serial numbers of valuables from jewelry to electronics.

-LOCK all vehicles, bikes, golf carts, etc at all times.

-DO NOT try to discover or apprehend the suspect yourself. Call 911 if you believe a crime is in progress and if you can get out of the house, or hide in place. Call 477-1000 if you think a crime might happen.

-Shred EVERY paper with any of your ID on it before throwing out.

-Sign up for CODE RED warnings and for the new Sheriff's Dept. smart phone APP on Lee County Sheriff's website: <http://www.sheriffleefl.org/>

TIPS, have we got TIPS!

Alva Fishing:



HOOKING THE BASS! The plastic worm is the most dependable artificial bait for largemouth bass. A weedless "Texas- or Carolina-rigged" worm is effective for fishing Florida lakes with heavy plant cover. Worms come in a variety of colors and scents, and bass may favor certain types depending on light conditions; be sure to have both light and dark colors available, as well as several sizes of tapered worm weights from 1/8 to ounce. Purple "metalflake" or "red shad" worms with twirly-tails are popular, and plastic lizards can be effective as well.

-Thank you WWW.VISITFLORIDA.COM

Alva Cooking:



SOUL FOOD COLLARDS! Prep 10 m, Cook 1 h, Ready In 1 h 10 m Heat oil in a large pot over medium-high heat. Add bacon, and cook until crisp. Remove bacon from pan, crumble and return to the pan. Add onion, and cook until tender, about 5 minutes. Add garlic, and cook until just fragrant. Add collard greens, and fry until they start to wilt.

Pour in chicken broth, and season with salt, pepper, and red pepper flakes. Reduce heat to low, cover, and simmer for 45 minutes, or until greens are tender.

-Thank you www.allrecipes.com

Alva Sunsets:



AWARD WINNING PICS: There are dozens of wonderful places to catch a great sunset over the Caloosahatchee River in Alva. My favorite is from the western sidewalk at the center of our drawbridge. Watching the colors change around the sun as it dips into the horizon is only beaten by the explosion of new colors all over the sky after the sun is gone and our gulf coast clouds say goodnight to the day.

-Thank you Amy Bennett Williams and facebook.com/pages/Alva-Bridge

What would you like all Alva to know about next month?

Send posters, photos (jpegs only) or articles of 500 words maximum you would like to see printed or contact the editor with any questions,

Ken DeWalt, kendewalt1@gmail.com

The deadline for receipt of any material is the 15th of the month previous to the month you wish the articles to run. Issues go out before the 1st of each month.

Please understand that all articles are subject to available space and editor's approval.